

# South Australian Screen Production Facilities



South Australian **Film Corporation**

SOUTH AUSTRALIAN  
FILM CORPORATION



Adelaide Studios

# Acknowledgement of Country

The South Australian Film Corporation (SAFC) acknowledges that we work on the traditional Country of the Kurna people of the Adelaide Plains, and we pay respect to Elders past and present. We recognise and respect their cultural heritage, spiritual beliefs and relationship to land and waters and acknowledge that they are of continuing importance to the Kurna people living today. We extend this respect to other First Nations Language Groups and other First Nations.



# Adelaide Studios

1 Mulberry Road, Glenside 5065

## DISTANCE TO CBD

4km / 10 minutes' drive

## DISTANCE TO AIRPORT

9.5km / 20 minutes' drive

## COUNCIL AREA

City of Burnside

## PRODUCTIONS

Talk to Me

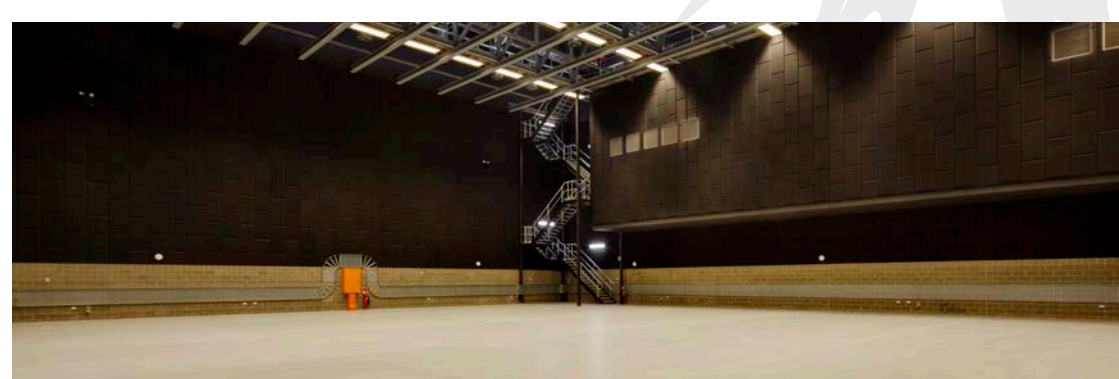
The Tourist

Mortal Kombat

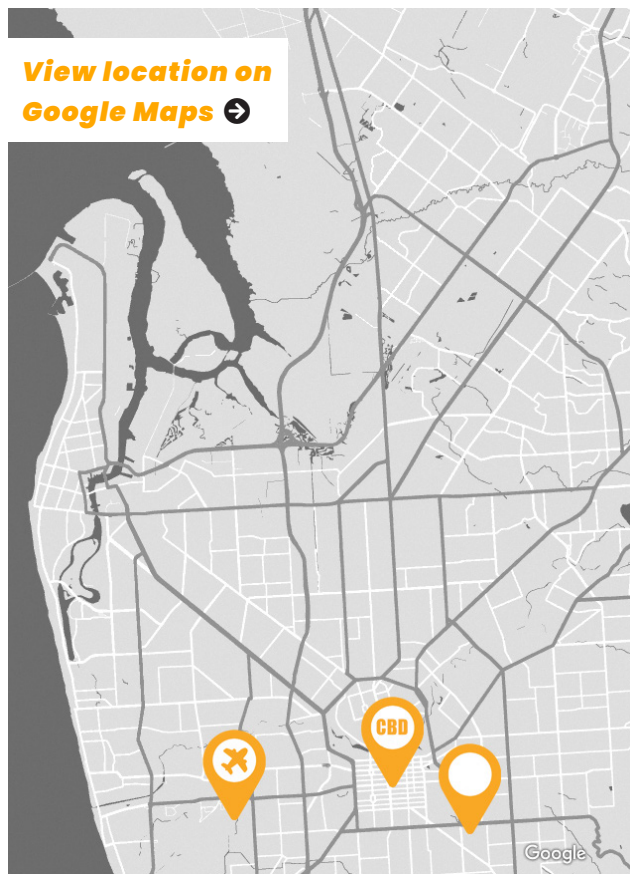
2067

I Am Mother

Hotel Mumbai



# Adelaide Studios



A short drive from the city and airport and a stone's throw away from South Australia's world class post-production and visual effects businesses, Adelaide Studios offers an ideal working environment for creation of your next feature film, television series or new media project.

Managed and operated by the South Australian Film Corporation, the purpose-built facilities include two sound stages, a Dolby certified Mixing Theatre, foley stage and edit rooms, production offices, 100-seat screening theatre and a set construction workshop.

Each of the two sound stages has

access to two production offices including art department and wardrobe, make-up rooms and cast waiting rooms, plus ample parking for trucks and cars in a secure and monitored area.

Each sound stage can easily accommodate Virtual Production set-ups, while the facilities also offer furnished, flexible workspaces for whatever your production needs.

# Adelaide Studios

## Sound Stage 1

### AREA

1,000 sq m (35 x 28.5m)  
10,763.9 sq ft (115.1 x 93.8ft)  
Painted concrete floor

### HEIGHT

15m (12m to gantry)  
49.2ft (39.3ft to gantry)

## Sound Stage 2

### AREA

400 sq m (17 x 23m)  
4,305 sq ft (55.7 x 75.4ft)  
Epoxy floor

### HEIGHT

12m (10m to gantry)  
39.3ft (32.8ft to gantry)

## Both Stages Feature

- 250 UC Gantry Beams on a 2.5m grid which carry a safe working load of 700 kilograms per linear metre
- 32 Amp and 50 Amp 3 phase power (415 volt) socket outlets throughout
- 10 Amp single phase (240 volt) socket outlets throughout
- Low velocity air conditioning (design background noise level in studios = 20+3db)
- 400 Amp powerlock

FIND OUT MORE

***View this listing in the SAFC Locations Gallery*** →

***safilm.com.au/adelaide-studios*** →

CONTACT DETAILS

SAFC Production  
& Development Team  
+61 8 8394 2029

***adelaidestudios@safilm.com.au*** →



# Adelaide Showground

Goodwood Road, Wayville 5034

## DISTANCE TO CBD

3km / 5 minutes' drive

## DISTANCE TO AIRPORT

7km / 15 minutes' drive

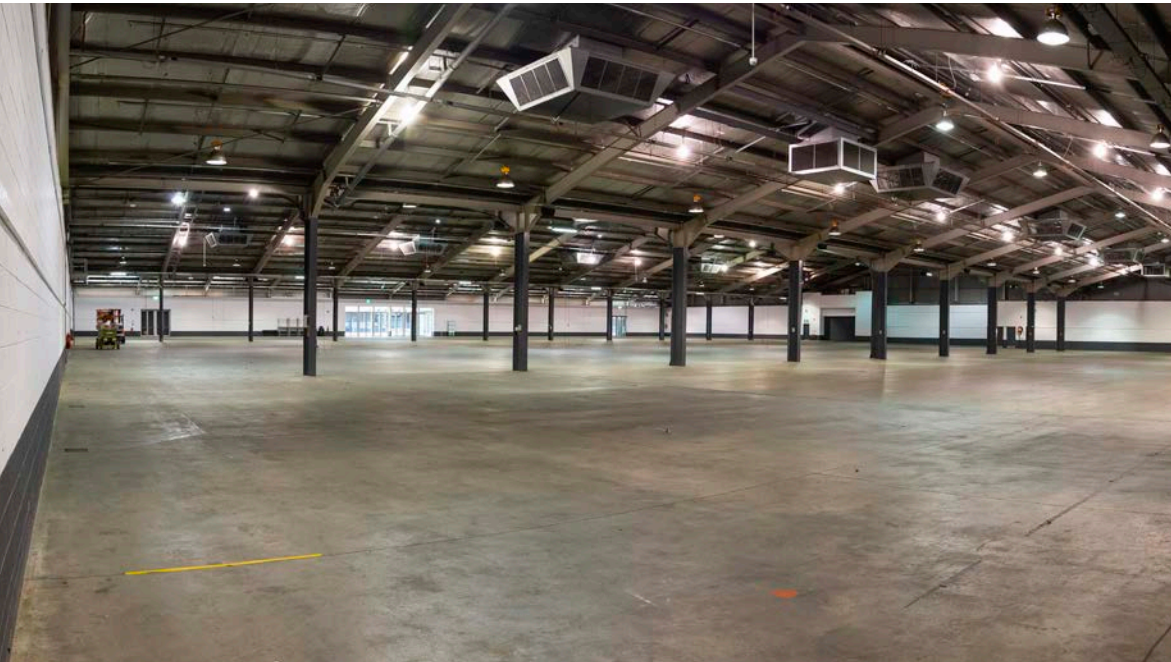
## COUNCIL AREA

City of Unley

## PRODUCTIONS

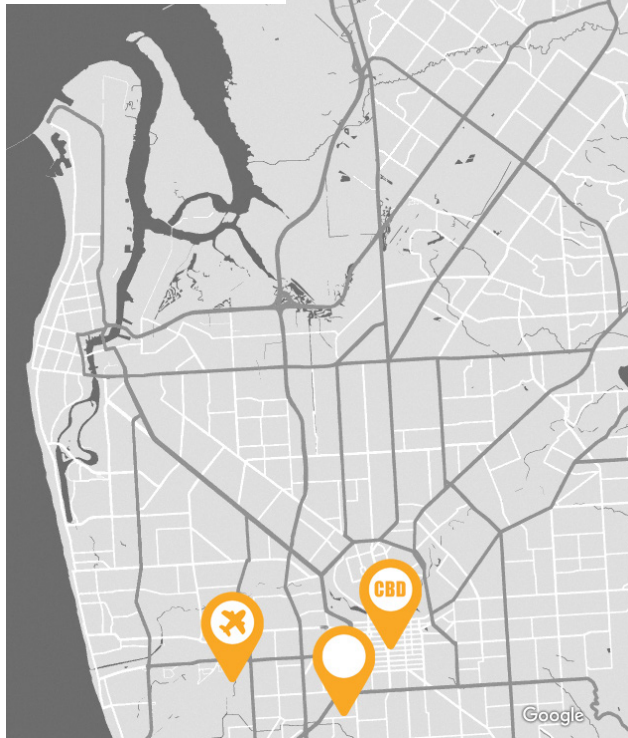
The Tourist

Gymnastics Academy:  
A Second Chance



# Adelaide Showground

**View location on  
Google Maps** →



South Australia's largest multipurpose venue, Adelaide Showground offers flexible indoor spaces catering for a wide variety of uses, including South Australia's most popular public event, the Royal Adelaide Show.

Two spaces are suitable for production requirements - the Ridley Centre and Wayville Pavilion.

Both are flexible open spaces with high ceilings and each offers ample car parking.

Exclusion dates apply from mid August to early October each year for the Royal Adelaide Show.

FIND OUT MORE

**[adelaideshowground.com.au](http://adelaideshowground.com.au)** →

**View this listing in the SAFC  
Locations Gallery** →

CONTACT DETAILS

Rhiannon Klar  
+61 414 892 252

**[rklar@adelaideshowground.com.au](mailto:rklar@adelaideshowground.com.au)** →



## Ridley Centre

### TOTAL AREA

1,815 sq m / 19,536 sq ft

### HEIGHT

From 7.7m / 25.26ft

With high ceilings and carpeted floors, this pavilion has an entry foyer with toilets, reverse-cycle heating and cooling, office space and a large loading dock. Ample car parking is available. Exclusion dates: mid August – early October each year.

## Wayville Pavilion

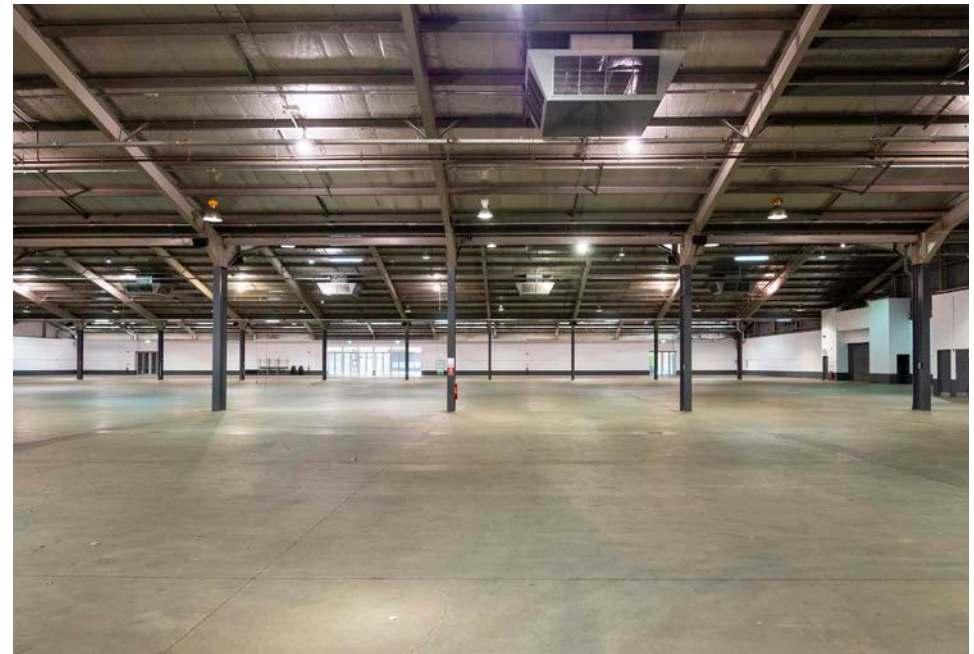
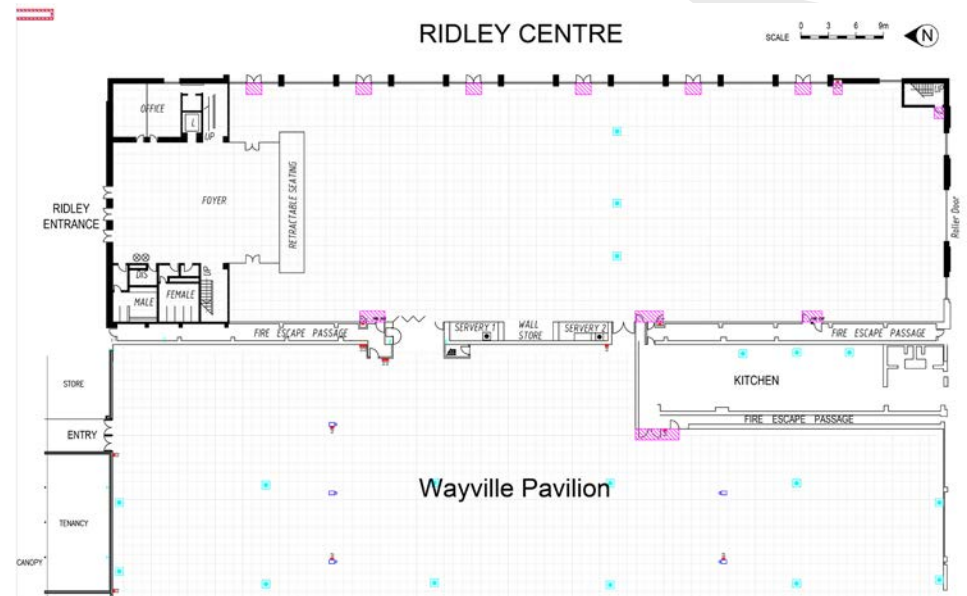
### TOTAL AREA

7,255 sq m / 78,092 sq ft

### HEIGHT

From 4.8m / 15.74ft

With high ceilings and an industrial look and feel, this versatile open space also features heating and cooling, office space and a large loading dock. Ample carparking is available, as is the ability to utilise the Showground's on-site catering company. Exclusion dates: mid August – early October each year.





# Direk

47-71 Edinburgh Road, Direk 5110

## DISTANCE TO CBD

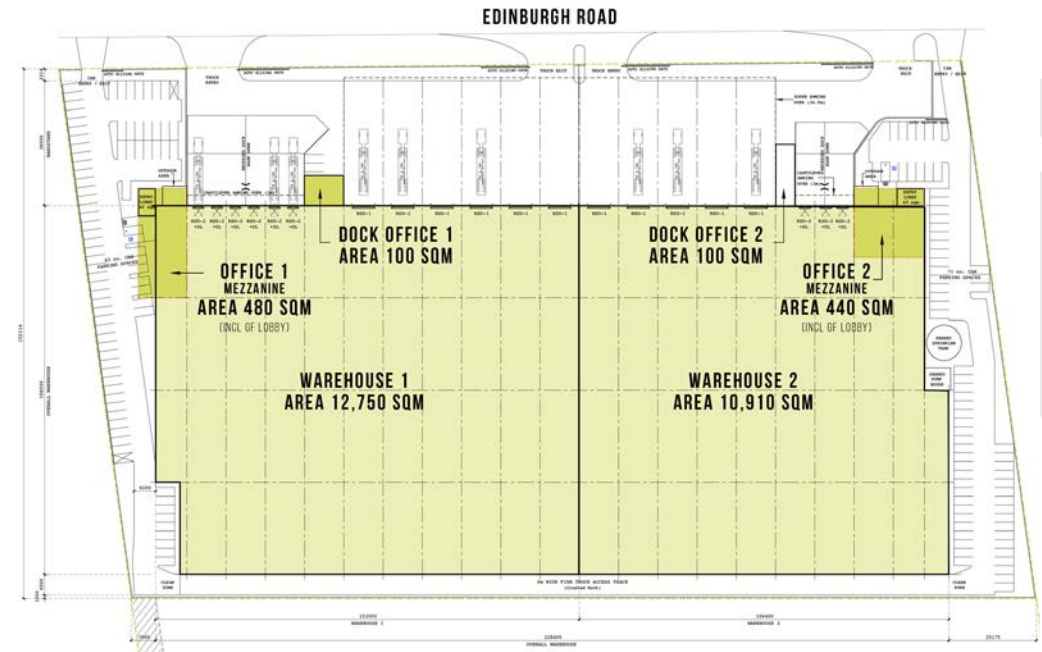
22km / 35 minutes' drive

## DISTANCE TO AIRPORT

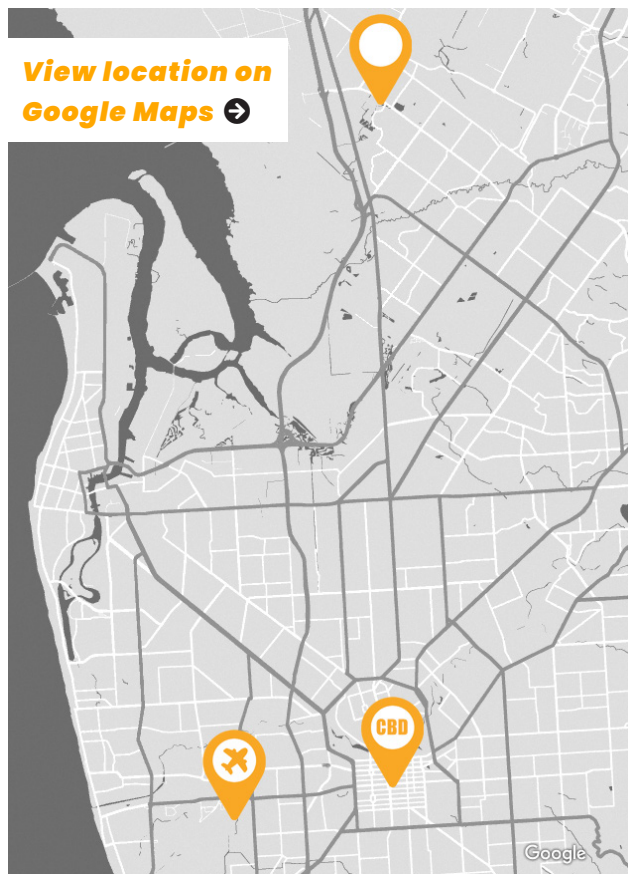
25km / 35 minutes' drive

## COUNCIL AREA

City of Salisbury



# Direk



Currently in development, this state-of-the-art warehouse facility will feature flexible areas from 10,000 sq m to 25,000 sq m, high clearance ceilings and a heavy-duty seven tonne floor loading capacity.

The north-facing facility will include corporate offices and amenities over two levels, extensive parking for more than 150 cars and a suite of eco-friendly features such as provision for EV charging, rainwater harvesting, a 500kw solar system, dedicated waste and recycling areas and smart controlled LED lighting.

**TOTAL WAREHOUSE AREA**  
23,660 sq m / 254,674 sq ft

**HEIGHT**  
10.4m / 34.12ft

**FIND OUT MORE**  
[cbre.com.au](https://www.cbre.com.au) →

#### CONTACT DETAILS

Cass Applebee | +61 402 753 432  
[cass.applebee@cbre.com.au](mailto:cass.applebee@cbre.com.au) →

David Reid | +61 418 810 865  
[david.reid@cbre.com.au](mailto:david.reid@cbre.com.au) →



# Lionsgate Business Park

180 Philip Highway, Elizabeth 5112

## DISTANCE TO CBD

22km / 35 minutes' drive

## DISTANCE TO AIRPORT

30km / 35 minutes' drive

## COUNCIL AREA

City of Playford

## PRODUCTIONS

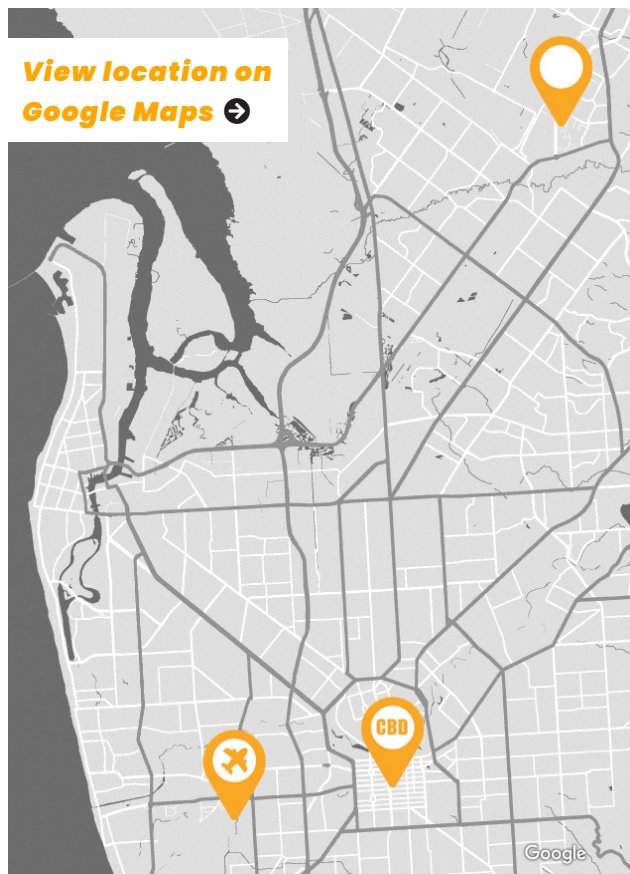
Pine Gap

Escape from Pretoria





# Lionsgate Business Park



Formerly the Australian manufacturing plant for General Motors Holden, Lionsgate is South Australia's largest business park offering a range of warehouse and office spaces.

Just half an hour's drive from the Adelaide CBD, Lionsgate is an adaptable multipurpose business precinct with spaces that can be divided to suit your requirements. The precinct also offers an on-site management team, 24/7 on site security guards and monitored security cameras.

There are several tenancies within the park suitable for screen production: Tenancies 2, 5 and 9.

## FIND OUT MORE

[cbre.com.au](https://www.cbre.com.au) →

[View this listing in the SAFC Locations Gallery](#) →

## CONTACT DETAILS

Cass Applebee | +61 402 753 432  
[cass.applebee@cbre.com.au](mailto:cass.applebee@cbre.com.au) →

David Reid | +61 418 810 865  
[david.reid@cbre.com.au](mailto:david.reid@cbre.com.au) →

## Tenancy 2

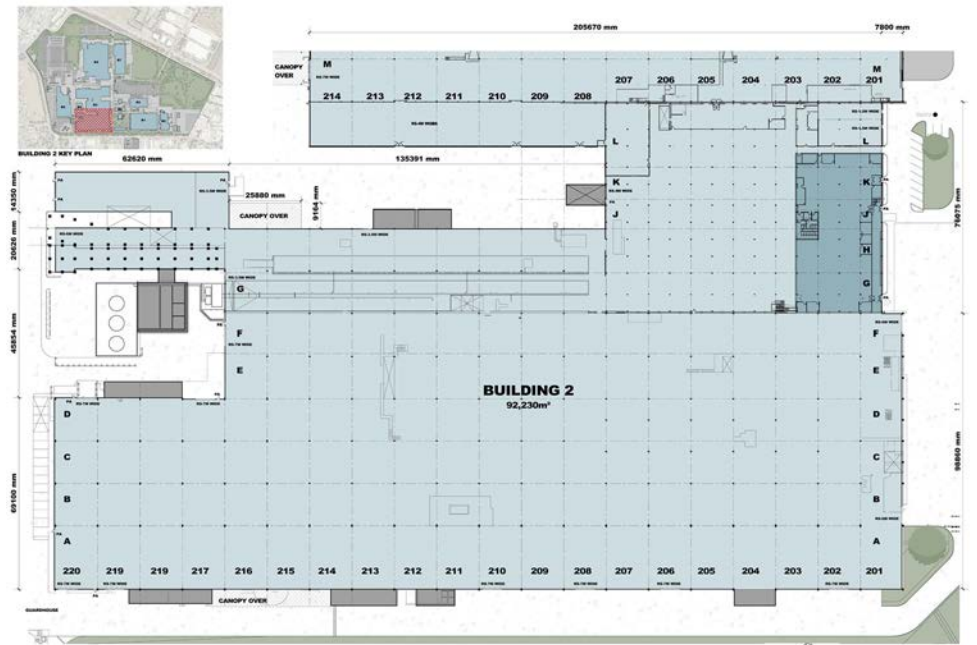
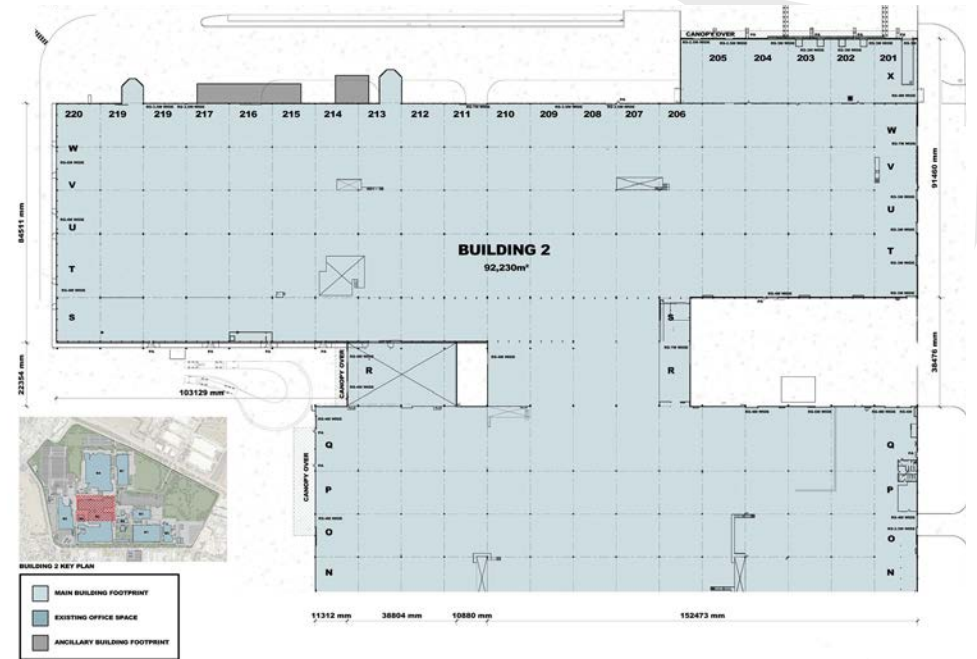
TOTAL WAREHOUSE AREA

93,070 sq m / 1,001,797 sq ft

HEIGHT

6.7m / 21ft

Features clear-span, sprinklered floorspace with heavy duty floors, substantial power supply and excellent articulated vehicle access, as well as functional office accommodation. An adaptable space that can be divided to suit occupier requirements.

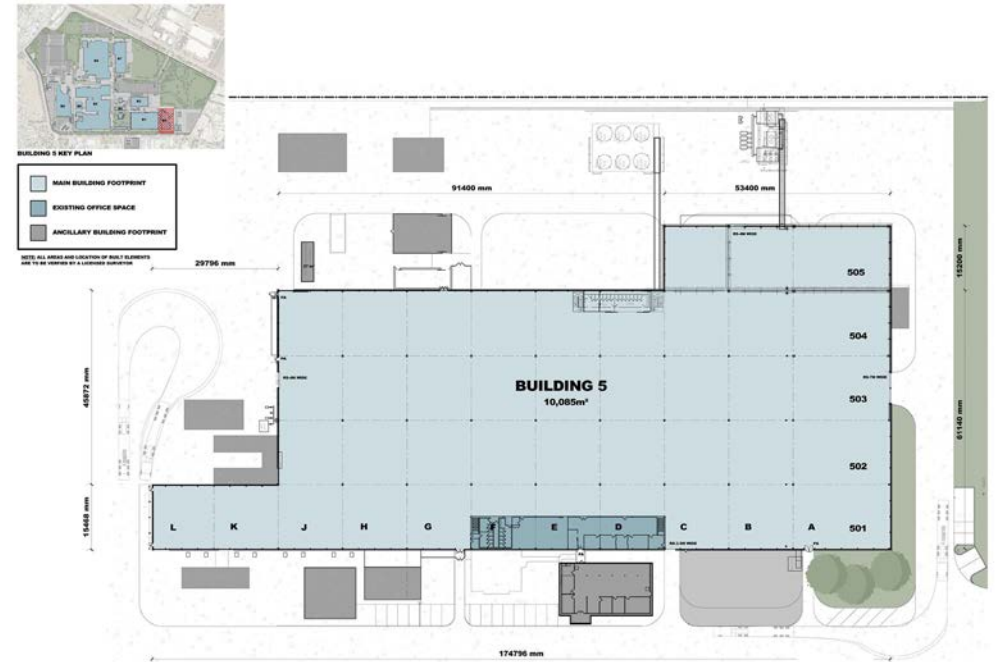


## Tenancy 5

TOTAL WAREHOUSE AREA  
11,770 sq m / 126,691 sq ft

HEIGHT  
7.4m / 24.2ft

Adaptable space that can be divided to suit occupier requirements. Features clear-span, sprinklered floorspace with heavy duty floors, substantial power supply and excellent articulated vehicle access, plus a 50 tonne gantry crane and additional hardstand immediately adjacent. Office accommodation, amenities and a lunchroom are also available.



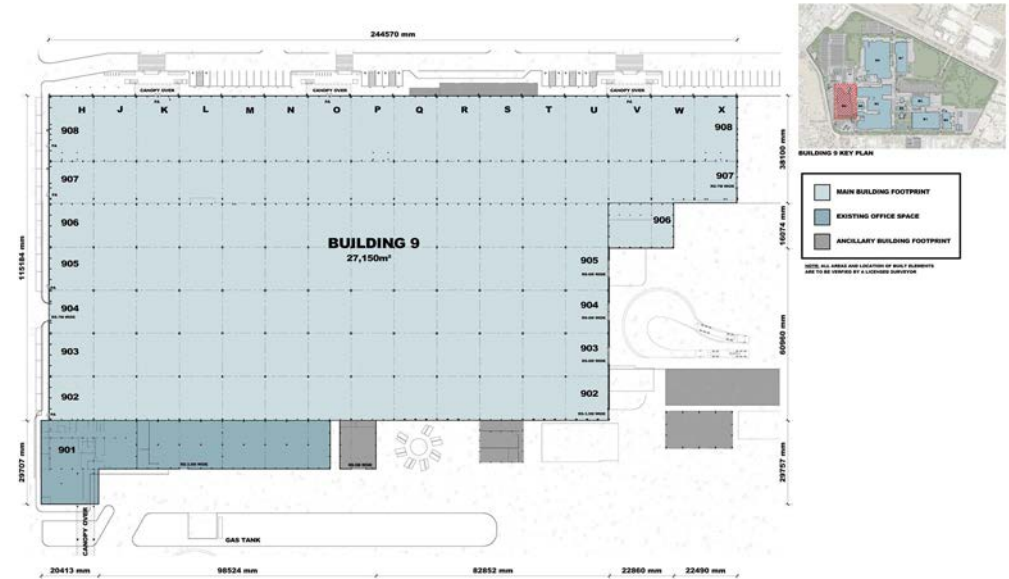


## Tenancy 9

TOTAL WAREHOUSE AREA  
28,910 sq m / 311,184 sq ft

HEIGHT  
Up to 20m / 65.61ft

Adaptable space that can be divided to suit occupier requirements. Three parallel buildings fully attached with massive ceiling heights and reinforced concrete floors rated to a minimum of 40Mpa, plus additional hardstand available immediately adjacent and substantial power supply. Ample office space and carparking available, with excellent articulated vehicle access.



# Sunjive Studios Adelaide

3 Butler Drive, Hendon 5014

## DISTANCE TO CBD

12km/ 20 minutes' drive

## DISTANCE TO AIRPORT

9km/ 15 minutes' drive

## COUNCIL AREA

City of Charles Sturt

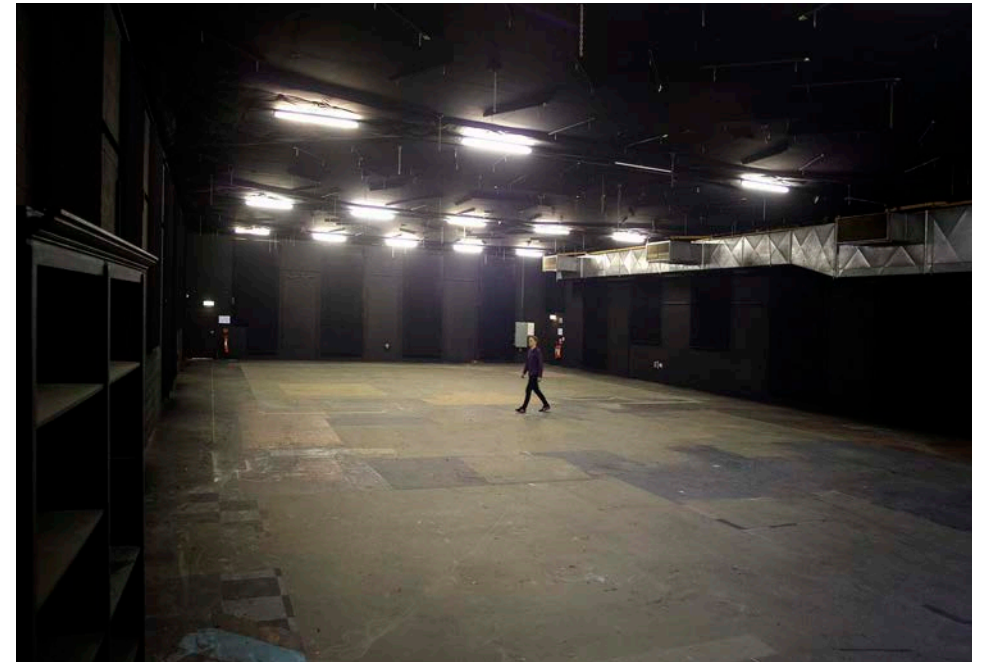
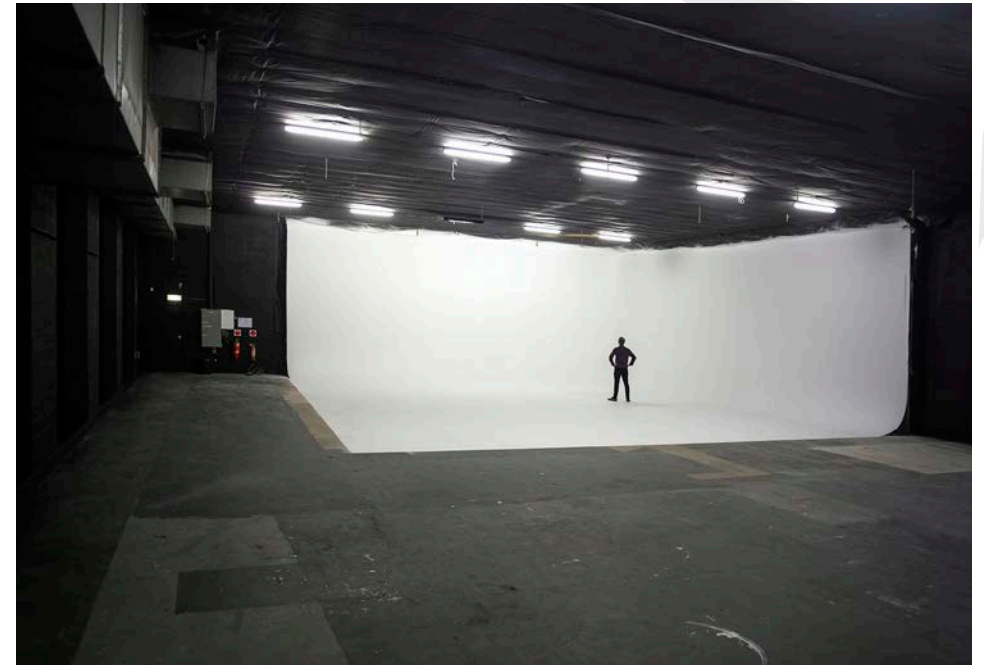
## PRODUCTIONS

Gold

I Am Mother

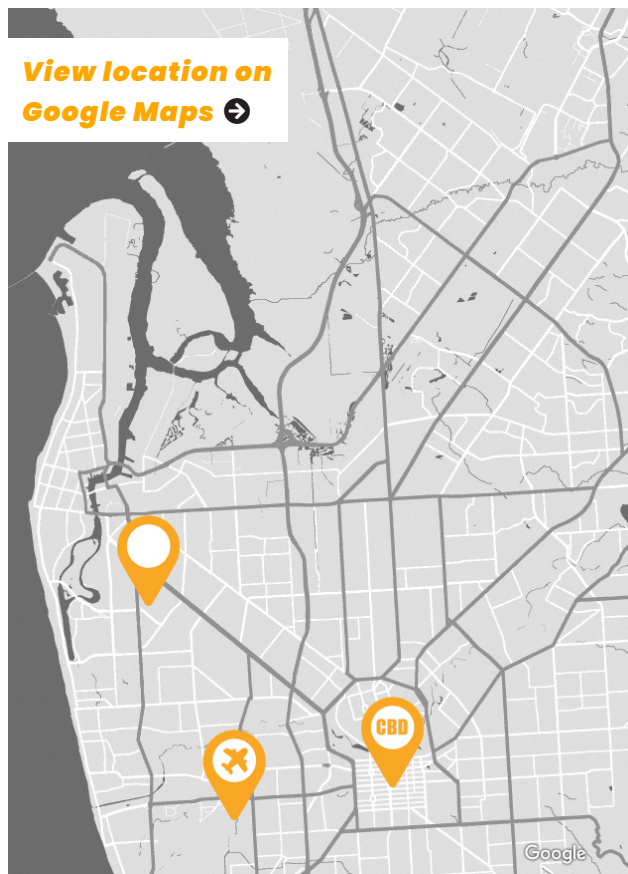
Awoken

Wolf Creek II





# Sunjive Studios Adelaide



Sunjive Studios Adelaide is the newest arm of Sunjive, an international, indie production company driven by creative talent. As the former home of the South Australian Film Corporation, which operated the site for more than 30 years until 2011, the facility has a rich legacy of Australian independent film and television productions.

The site boasts two sound stages, one with Cyclorama infinity wall, plus edit suites, sound suite, ADR/ Foley suite, production offices, hair and make-up spaces, props store and art department. Office space is also available for rent.

## Sound Stage 1

### AREA

484 sq m (30.5m x 16.2m)  
5,209 sq ft

### HEIGHT

5m / 16.4ft

## Sound Stage 2

### AREA

373 sq m (24.5m x 16.2m)  
4,014 sq ft

### HEIGHT

5m / 16.4ft



# Sunjive Studios Adelaide

## Both stages feature:

- Super quiet reverse cycle air-conditioning system with advanced temperature control
- Sound attenuation designed to accommodate sets for superior live recording
- 4m high loading doors, allowing trucks or cars to be driven right into the studio to suit your needs
- Close proximity to production offices, makeup and wardrobe rooms

## FIND OUT MORE

[sunjivestudios.com](https://www.sunjivestudios.com) →

[View this listing in the SAFC Locations Gallery](#) →

## CONTACT DETAILS

Troy Wilkey  
Facilities Manager  
+61 0452 290 387

[operations@sunjivestudios.com](mailto:operations@sunjivestudios.com) →

# SAFILM.COM.AU

This brochure is an overview of selected filming facilities in South Australia, and is not indicative of booking availability. For specific booking inquiries, please contact each facility directly.

Information about other spaces is available on request.

Need more information about filming in South Australia? Please contact the SAFC's Production and Development Team to discuss your needs.

**P** +61 8 8394 2029

**E** [programs@safilm.com.au](mailto:programs@safilm.com.au) ↗

**View all facilities on our  
Google Maps** ↗



**South Australian Film Corporation**